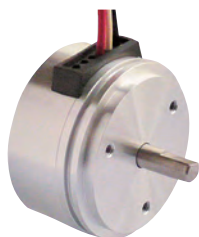


## Angle Sensor

φ 16 ~ φ 62 までの豊富なラインナップ  
安価～超精密までのバリエーション



### CP-45H



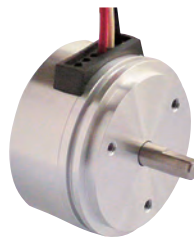
**Orange Pot**

Hall IC (Contactless)

· Input	: DC5V ± 0.5V
· Elect. Angle	: 360°
· Absolute Lin.	: ± 0.4%FS
· Output	: 10 ~ 90%Vin
· φ	45 × 25mm

\* Available with dual output type, IP54

### CP-45H-A



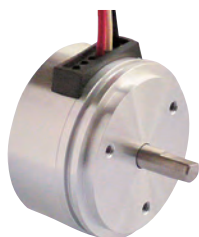
**Orange Pot**

Hall IC (Contactless)

· Input	: DC24 ± 4V
· Elect. Angle	: 360°
· Absolute Lin.	: ± 1%FS
· Output	: DC4 ~ 20mA
· φ	45 × 25mm

\* Available with dual output type, IP54

### CP-45H-5V



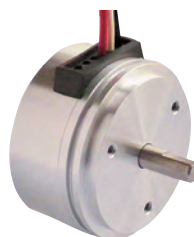
**Orange Pot**

Hall IC (Contactless)

· Input	: DC8~32V
· Elect. Angle	: 360°
· Absolute Lin.	: ± 1%FS
· Output	: 0 ~ 5V
· φ	45 × 25mm

\* Available with dual output type, IP54

### CP-45H-10V



**Orange Pot**

Hall IC (Contactless)

· Input	: DC14 ~ 32V
· Elect. Angle	: 360°
· Absolute Lin.	: ± 1%FS
· Output	: 0 ~ 10V
· φ	45 × 25mm

\* Available with dual output type, IP54

### CP-2HA

IP65



**Orange Pot**

Hall IC (Contactless)

· Input	: DC5V ± 0.5V
· Elect. Angle	: 350°
· Ind. Lin.	: ± 1%FS
· Output	: 10 ~ 90%Vin
· φ	50 × 22mm

\* Dual output

### CP-45H-10S



**Orange Pot**

Hall Element (Contactless)

· Input	: DC5V ± 0.5V
· Elect. Angle	: 3500° Max.
· Multi Turn (Gear Ratio: 10:1)	
· Absolute Lin.	: ± 0.4%FS
· Repeatability	: ± 0.2%FS (Backlash included)
· Output	: 5 ~ 95%Vin
· W61 × D50 × H49mm	

### CP-2HK / -8R / -10R



**Orange Pot**

Hall IC (Contactless)

· Input	: DC5V ± 0.5V / DC8V ± 0.5V / DC10V ± 0.5V
· Elect. Angle	: ± 40°
· Ind. Lin.	: ± 0.5%FS
· Output	: 10 ~ 90%Vin
· 42 × 63 × H32mm	

**Blue Pot**

Magneto-Resistive Element (Contactless)

· Input	: DC24V ± 4V
· Elect. Angle	: ± 45°
· Ind. Lin.	: ± 2.2%FS
· Output	: 4 ~ 20mA
· 42 × 63 × H32mm	

ホームページリニューアルしました！

詳しくは

<https://www.midori.co.jp>

**RoHS**

掲載の製品はすべて EU の RoHS (ローズ) 基準に適合しています。

\* All products on these pages are complied with "RoHS"

## CP-1HX Series **NEW** Slim size contactless Angle Sensor 薄型 無接触回転角度センサ



Hall IC (Contactless)	
Input	DC5V ± 0.5V
Elect. Angle	± 180°
Absolute Lin.	± 2%FS
Output	Ratio, PWM
Analog Output	10 ~ 90%Vin
W28 × D18 × H4.4	
* Available with dual output type	

- ◆薄型：取付時の出張りを削減  
・機器へ取付けた際の出張りは 4.4mm



機器の取付面

- ◆シャフト形状：2種類から選択可能
- ◆広角度、2出力、レシオ出力、PWM出力にも対応
- ◆耐電磁波、静電気、外部磁界
- ◆セパレート(センサ、シャフトユニット)タイプも可

### CP-20H



Hall IC (Contactless)	
Input	DC5V ± 0.5V
Elect. Angle	340°
Absolute Lin.	± 1%FS
Output	10 ~ 90%Vin
φ 22 × 12.5mm	

### CP-30H



Hall IC (Contactless)	
Input	DC5V ± 0.5V
Elect. Angle	± 50°
Ind. Lin.	± 3%FS
Output	10 ~ 90%Vin
φ 28 × 29mm	
* Low Torque (0.3mN·m Max.)	

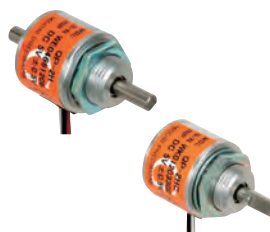
### CP-2HB

Low Cost



Hall IC (Contactless)	
Input	DC5V ± 0.5V
Elect. Angle	± 45°
Ind. Lin.	± 3%FS
Output	10 ~ 90%Vin
φ 20 × 11mm	

### QP-2H / QP-2HC



Hall IC (Contactless)	
Input	DC5V ± 0.5V
Elect. Angle	± 45°
Ind. Lin.	± 1.5%FS
Output	10 ~ 90%Vin
φ 15 × 14mm (Ball Bearing)	
* Low Torque (0.05mN·m Max.)	

### CP-22H-12S / 50S



Hall IC (Contactless)	
Input	DC5V ± 0.5V
Elect. Angle	4320° / 18000°
Absolute Lin.	± 1%FS
Hysteresis	0.5%Vin (Backlash included)
Output	10 ~ 90%Vin
W22 × D30 × H44mm	
* Available with dual output type, IP67	

### CP-22HS-50S

IP67



Hall IC (Contactless)	
Input	DC5V ± 0.5V
Elect. Angle	18000°
Absolute Lin.	± 1%FS
Hysteresis	0.5%Vin (Backlash included)
Output	10 ~ 90%Vin
W22 × D30 × H44mm	
* Available with dual output type	

### CP-3HABS

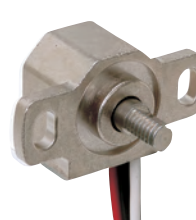
IP65



Hall IC (Contactless)	
Input	DC5V ± 0.5V
Elect. Angle	± 45°
Ind. Lin.	± 3%FS
Output	10 ~ 90%Vin
φ 40 × 18mm	
* Dual output, Built-in Return Spring	

### QP-3HB-111-02

IP65



Hall IC (Contactless)	
Input	DC5V ± 0.5V
Elect. Angle	± 45°
Ind. Lin.	± 2%FS
Output	10 ~ 90%Vin
φ 39 × 17mm	
* Available with dual output type	
* Built-in Return Spring	

ホームページリニューアルしました！

詳しくは  
<https://www.midori.co.jp>

**RoHS** 掲載の製品はすべて EU の RoHS (ローズ) 基準に適合しています。

\* All products on these pages are complied with "RoHS"

## CP-16U Low current consumption **NEW**

*Blue Pot*



Magneto-Resistive Element (Contactless)	
·Input	: DC3 ~ 5.5V
·Elect. Angle	: ± 45°
·Ind. Lin.	: ± 1.5%FS
·Output	: 3.5 ~ 6.5%Vin/10°
·φ	16 × 13mm
·current consumption	: 0.6mA Max.

## CP-2UN

*Blue Pot*



Magneto-Resistive Element (Contactless)	
·Input	: Max.DC10V
·Elect. Angle	: ± 45°
·Ind. Lin.	: ± 2%FS
·Output	: 2%Vin/10° Min.
·φ	16 × 13mm

## CP-2FL Short Delivery **NEW**

Low Cost

*Green Pot*



Conductive Plastic	
·Res.	: 1k, 2k, 5k, 10kΩ ± 20%
·Elect. Angle	: 340°
·Ind. Lin.	: ± 2%
·φ	22.3 × 12.5mm
·Metal Bearing	
·Shaft	: φ 3.175mm(1/8in)

## CP-2FL-6 Short Delivery **NEW**

Low Cost

*Green Pot*



Conductive Plastic	
·Res.	: 1k, 2k, 5k, 10kΩ ± 20%
·Elect. Angle	: 340°
·Ind. Lin.	: ± 2%
·φ	22.3 × 12.5mm
·Metal Bearing	
·Shaft	: φ 6mm

## CP-2FB (b) J

*Green Pot*



Conductive Plastic	
·Res.	: 1k, 2k, 5k, 10kΩ ± 20%
·Elect. Angle	: 340°
·Ind. Lin.	: ± 1%
·φ	22.3 × 11.3mm
·Ball Bearing	
* Metal Bearing:CP-2FB (m) J	

## CP-2FK (b) J

*Green Pot*



Conductive Plastic	
·Res.	: 1k, 2k, 5k, 10kΩ ± 20%
·Elect. Angle	: 340°
·Ind. Lin.	: ± 1%
·φ	22.3 × 15mm
·Ball Bearing	
·Sevo Mount	
* Metal Bearing:CP-2FK (m) J	

## CP-2FBJ-6

*Green Pot*



Conductive Plastic	
·Res.	: 1k, 2k, 5k, 10kΩ ± 20%
·Elect. Angle	: 340°
·Ind. Lin.	: ± 1%
·φ	22.3 × 11.3mm
·Metal Bearing	
·Shaft	: φ 6mm

## CP-2FCB (m)

Low Cost

*Green Pot*



Conductive Plastic	
·Res.	: 5kΩ ± 20%
·Elect. Angle	: 340°
·Ind. Lin.	: ± 1%
·φ	22.3 × 11mm
* Accessory : Connector, Leadwires	

## CP-2FABSJ

IP65

*Green Pot*



Conductive Plastic	
·Res	: 1kΩ ± 20%
·Elect. Angle	: 90°
·Ind. Lin.	: ± 3%
·Power Rating	: DC18V Max.
·φ	50 × 22mm
* Shaft with Return Spring	
* Available with dual output	

## CP-2FABSJ-06 Wide Angle **NEW**

IP65

*Green Pot*



Conductive Plastic	
·Res	: 1kΩ ± 20%
·Elect. Angle	: 340°
·Ind. Lin.	: ± 1%
·Power Rating	: DC18V Max.
·φ	50 × 22mm

ホームページリニューアルしました!

詳しくは  
<https://www.midori.co.jp>

**RoHS** 掲載の製品はすべて EU の RoHS (ローズ) 基準に適合しています。

※ All products on these pages are complied with "RoHS"

## CP-45FB Series **NEW** High Precision, Conductive plastic Angle potentiometer 高精度、接触式回転角度センサ



Conductive Plastic

· Res.	: 1k, 2k, 5k, 10k Ω ± 15%
· Elect. Angle	: 350°
· Ind. Lin.	: ± 0.1%
· Total Mechanical Travel	: 360° Endless
· Operating Temp. Range	: -40 ~ 120°C
· Life	: 50 Million cycle
· φ	45 × 13.5mm

- ◆従来の接触式 (CPP-45、CPP-45BJ) の後継機
- ◆高精度：単独直線性 0.1%
- ◆出力：1、2 出力
- ◆耐久性向上
- ◆半田付けが容易な平端子を採用
- ◆従来品の CPP-45\* シリーズとの取付互換性有り

### CPP-35/35B



Conductive Plastic

· Res.	: 1k, 2k, 5k, 10kΩ ± 20%
· Elect. Angle	: 340°
· Ind. Lin.	: ± 1%
· Shaft	: φ 4mm / φ 6mm
· φ	37 × 18mm / φ 37 × 18mm

### CPP-45/45B



Conductive Plastic

· Res.	: 1k, 2k, 5k, 10k, 20kΩ ± 15%
· Elect. Angle	: 350°
· Ind. Lin.	: ± 0.3%
· Shaft	: φ 4mm / φ 6mm
· φ	45 × 18mm

### CPP-45SB

IP54



Conductive Plastic

· Res.	: 1k, 2k, 5k, 10k, 20kΩ ± 15%
· Elect. Angle	: 350°
· Ind. Lin.	: ± 0.3%
· φ	45 × 18mm

\* Water Ploof (Except Terminals)

### CPP-45RBN

IP54

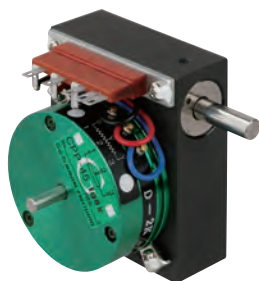


Conductive Plastic

· Res.	: 1k, 2k, 5k, 10k, 20kΩ ± 15%
· Elect. Angle	: 350°
· Ind. Lin.	: ± 0.3%
· φ	87 × 118mm

\* Accessory : Connector

### CPP-45-10SX



Conductive Plastic

· Res.	: 1k, 2k, 5k, 10k, 20kΩ ± 15%
· Elect. Angle	: 3500°
· Multi Turn (Gear Ratio: 10 : 1)	
· Ind. Lin.	: ± 0.3%
· Repeatability	: ± 0.03% (Backlash included)
· W61 × D50 × H49mm	

### CPP-60



Conductive Plastic

· Res.	: 1k, 2k, 5k, 10k, 20kΩ ± 15%
· Elect. Angle	: 355°
· Ind. Lin.	: ± 0.05%
· φ	62 × 27.5mm

\* High Accuracy

### CP-2F-10S-RB



Conductive Plastic

· Res.	: 1k, 2k, 5kΩ ± 20%
· Elect. Angle	: 3400°
· Multi Turn (Gear Ratio: 10 : 1)	
· Ind. Lin.	: ± 1%
· Repeatability	: ± 0.5% (Backlash included)
· W30 × D30 × H30mm	

### CP-2FWP-10S

IP65



Conductive Plastic

· Res.	: 1k, 2k, 5kΩ ± 20%
· Elect. Angle	: 3400°
· Multi Turn (Gear Ratio: 10 : 1)	
· Ind. Lin.	: ± 1%
· Repeatability	: ± 0.5% (Backlash included)
· W27 × D35 × H47mm	

ホームページリニューアルしました！

詳しくは

<https://www.midori.co.jp>

**RoHS**

掲載の製品はすべて EU の RoHS (ローズ) 基準に適合しています。

\* All products on these pages are complied with "RoHS"