

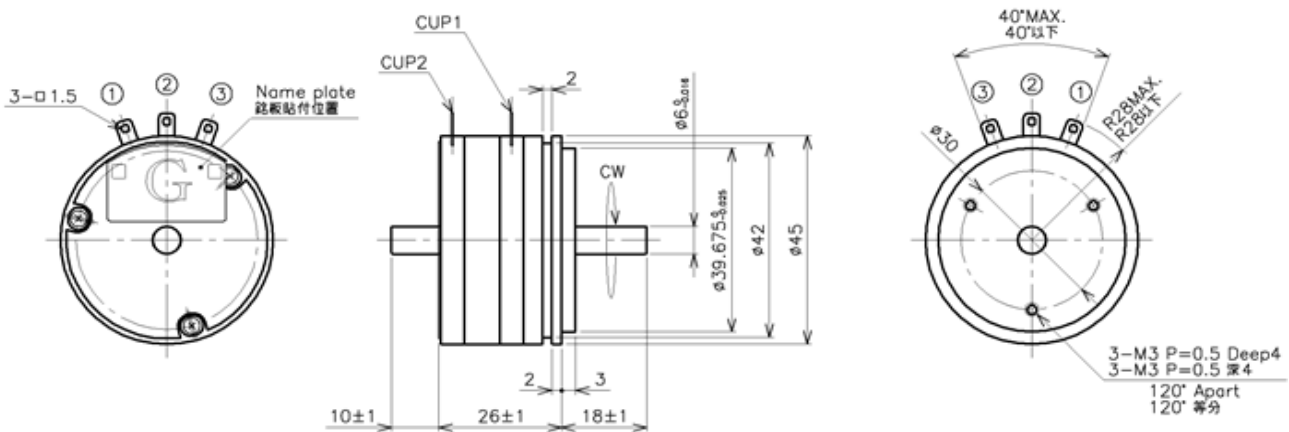
Conductive Plastic Angle Sensor

# CP-45F Series CP-45FB×2

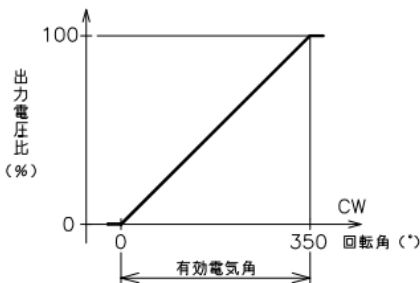


- Conductive Plastic Angle Sensor
  - Prolonged lifetime - 50 Mil. Revolution min.
  - Effective Electrical Travel : 350°
  - Independent Linearity : ±0.1%
  - Retio Output
  - Servo Mount and Screw Mount
- 【Options】
- Shaft dia. 4mm
  - Phase Outputs type
  - Additional Center Tap :  
 C.T(A) ... No shorted angle  
 C.T(B) ... Shorted on Tap (Shorted angle 3° approx.)

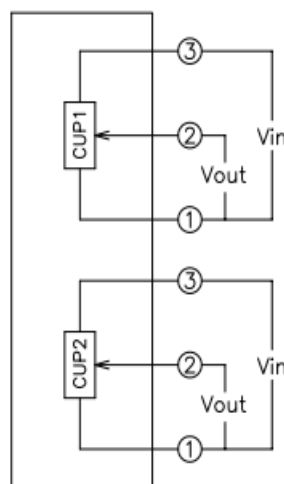
## Dimension [mm]



## Output Characteristics

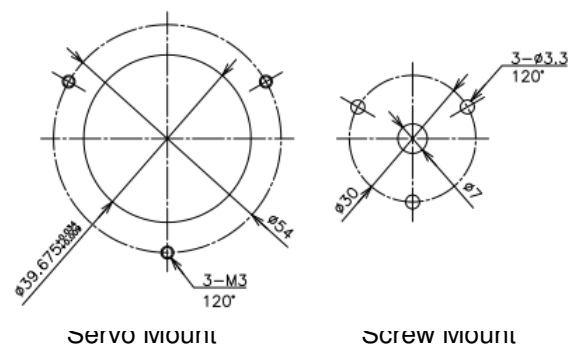


## Schematic



・各数字は、端子番号を示す。

## Mounting



<b>【Model No.】</b>	CP-45FB × 2
--------------------	-------------

**【Electrical Specifications】**

Effective Electrical Travel	350 +3, -2	°
Total Resistance	( Standard ) 1, 2, 5, 10 (Option) 0.5, 20	k Ω
Total Resistance Tolerance	±15	%
Independent Linearity	±0.1	%
Rated Dissipation	1.8/70°C	W
Output Smoothness	MAX. 0.1	%
Insulation Resistance	MIN. 100/DC1000V	MΩ
Dielectric Strength	AC1000/1 Minute	V
Temperature Coefficient of Resistance	±400	ppm/K

**【Mechanical Specifications】**

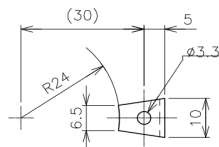
Total Mechanical Travel	360 Endless	°
Torque	MAX 3.3	mN·m
Thrust Load Tolerance	2	N
Radial Load Tolerance	6	N
Mass	75	g

**【Environmental Specifications】**

Life Cycles	50 Million	Cycle
Category Temperature Range	-40~+120	°C
Storage Temperature Range	-40~+120	°C
Vibration	200m/s <sup>2</sup> 2000Hz 3 axis 2 hours each	
Shock	600m/s <sup>2</sup> 11ms 6 directions 3 times	

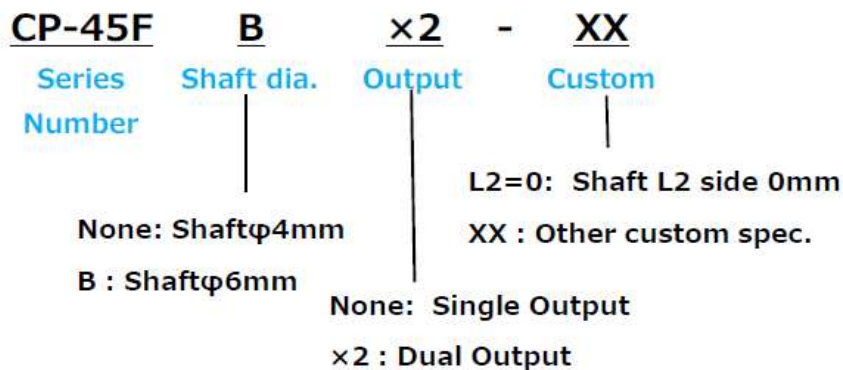
**■ Accessories**

Mounting Cleats : 3 pieces



t=1.2

**【CP-45F Series Model Number Designation】**



**■ Handling Instruction**

- To avoid burnout of resistive element, do not supply more than 1mA current to terminal 2.
- Miswiring might cause burnout of resistive element.
- To reduce sliding noise, add load resistance should be more than 100times and less than 1000times of total resistance.
- Slight continuous vibration such as dither might cause short lifetime of the sensor.