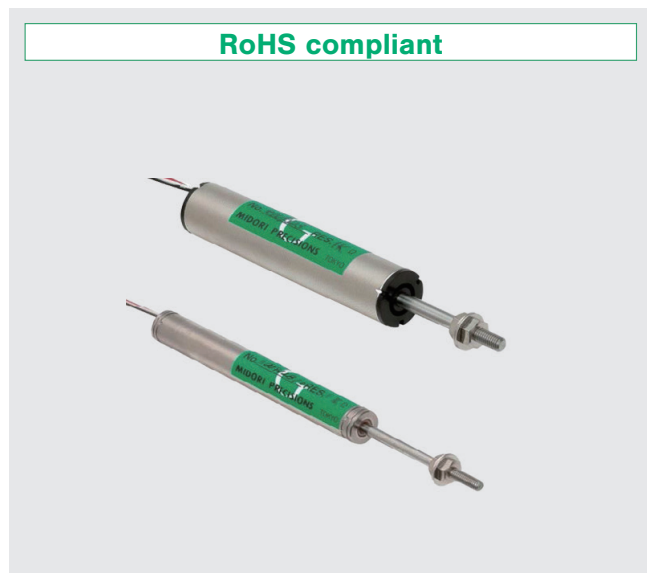


ULTRA SMALL HOUSING, ENABLE TO INSTALL IN TIGHT SPACE

CONDUCTIVE PLASTIC LINEAR SENSOR

LP-FP series



FEATURES

- Conductive Plastic Linear Sensor
- Ultra small housing diameter ϕ 12mm and ϕ 8mm
- Effective Electrical Travel :
20 \pm 0.5 mm / 30 \pm 0.5 mm / 50 \pm 0.5 mm
- Independent Linearity : \pm 1%FS
- Ratio Output

Material

- Housing : Aluminum
- Shaft : Stainless Steel
- Bearing : Copper alloy

PART NUMBER DESIGNATION

LP - 20 F P

Effective Electrical Travel

20 : 20 mm
30 : 30 mm
50 : 50 mm

Output type

P : Housing dia. ϕ 12 mm, Shaft dia. M3 mm
QJ : Housing dia. ϕ 8 mm, Shaft dia. M2.5 mm

STANDARD SPECIFICATIONS

Electrical characteristics

Model No.	LP-20FP	LP-30FP	LP-50FP	LP-30FQJ
Effective Electrical Travel	20 mm	30 mm	50 mm	30 mm
Total Resistance	1 k Ω			
Total Resistance Tolerance	\pm 20%			
Independent Linearity	\pm 1%FS			
Rated Dissipation	0.6 W / 70 $^{\circ}$ C	0.9 W / 70 $^{\circ}$ C	1.5 W / 70 $^{\circ}$ C	0.9 W / 70 $^{\circ}$ C
Output Smoothness	0.1% max.			
Insulation Resistance	100 M Ω min. / 500 VDC			
Dielectric Strength	500 VAC / 1 Minute			
TC of Resistance	\pm 400 ppm/K			

Mechanical characteristics

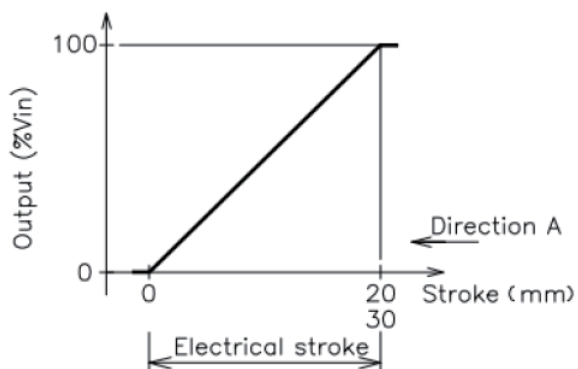
Friction	0.4 N max.	0.4 N max.	0.4 N max.	0.3 N max.
Net weight	Approx.18 g	Approx.20 g	Approx.25 g	Approx.15 g

LP-FP

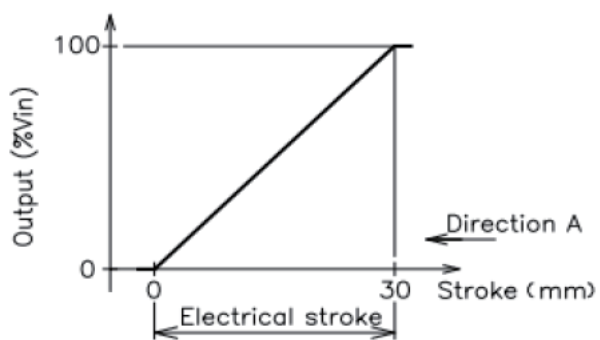
POTENTIOMETERS

■ OUTPUT CHARACTERISTICS

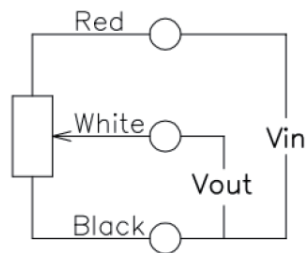
● LP-xxFP



● LP-30FQJ



■ SCHEMATIC



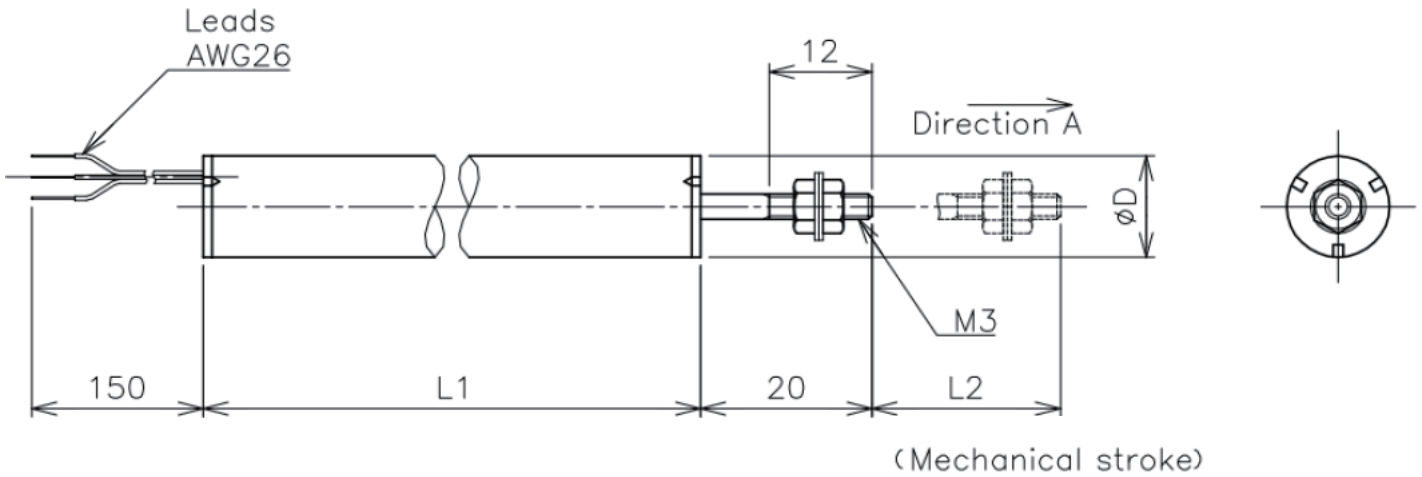
Red, White, Black indicate lead colors.

LP-FP POTENTIOMETERS

OUTLINE DIMENSIONS

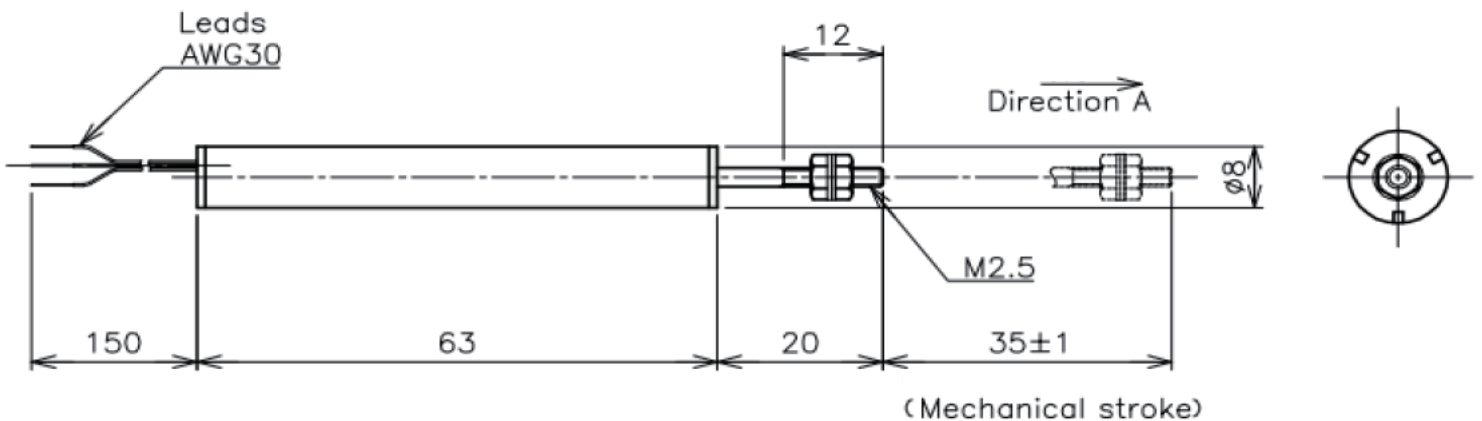
(Unit:mm)

● LP-xxFP



Model No.	LP-20FP	LP-30FP	LP-50FP
Housing Length L1	48 mm	58 mm	78 mm
ϕD	$\phi 12$ mm		
Mechanical stroke L2	22±1 mm	32±1 mm	52±1 mm

● LP-30FQJ



<Accessories>

M3 Nut, Plain washer 2 pieces each

HANDLING INSTRUCTION

- To avoid burnout of resistive element, do not supply more than 1mA current to terminal 2.