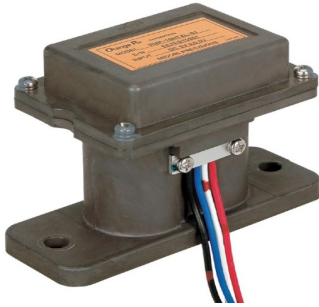


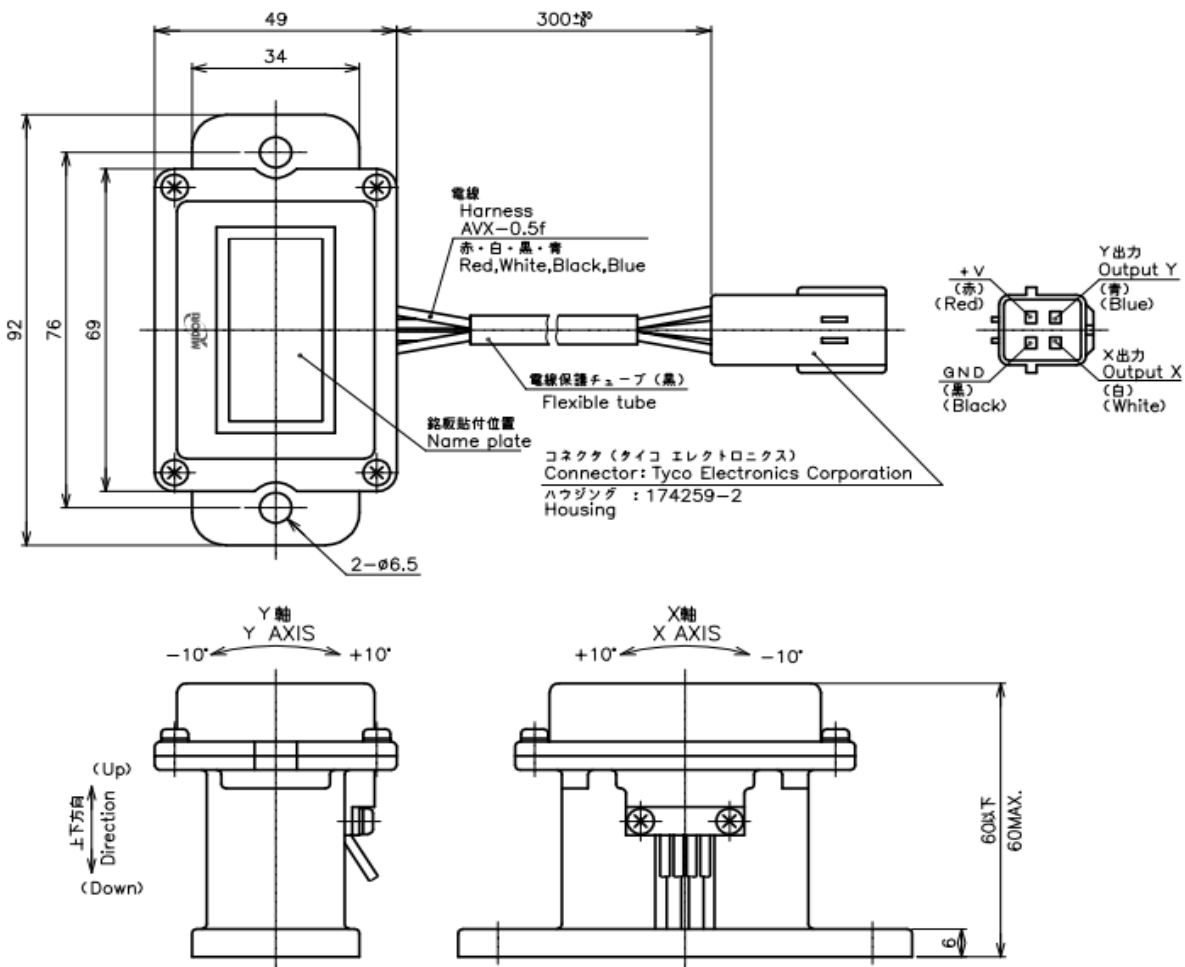
Contactless Hall-IC Tilt Angle Sensor

PMP-HTL Series - PMP-xxHTxL

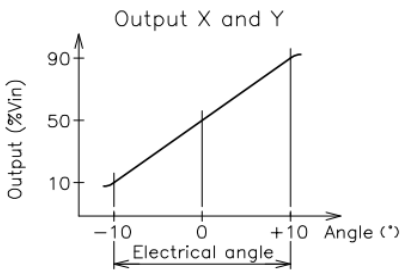


- Contactless Single / Dual Axis Tilt Angle Sensor
- Spring plate pendulum mechanism
 - Single Axis (X-axis ONLY) : PMP-xxHTL
 - Dual Axis : PMP-xxHTZL
- Effective Electrical Tilt Angle :
 - ±5° : PMP-5HTL/5HTZL
 - ±10° : PMP-5HTL/10HTZL
 - ±20° : PMP-5HTL/20HTZL
 - ±30° : PMP-5HTL/30HTZL
- Center-based Linearity : ±1%FS(X,Y-axis)
- IP Rating : IP67
- 【Options】
- Different Effective Electrical Tilt Angle between X and Y axis
(ex. X-axis=± 5°, Y-axis=±10°)
- Other damper oil viscosity
- Narrower output voltage range
- 【Material】
- Housing : Aluminum

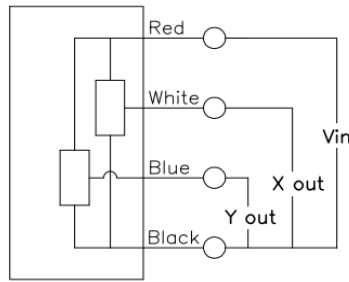
■ Dimension [mm]



■ Output Characteristics

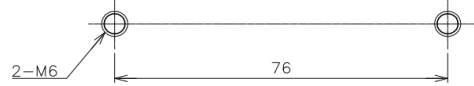


■ Schematic



Red, White, Blue, Black indicate lead colors.

■ Mounting



【Model No.】

PMP-10HTZL	PMP-5HTZL	PMP-20HTZL	PMP-30HTZL
------------	-----------	------------	------------

【Electrical Data】

	X and Y axis				
Electrical Tilt Angle	± 10	± 5	± 20	± 30	°
Output Range	10~90				%Vin
Index Point	50±4	50±8	50±3		%Vin
Zero Based Linearity	± 1			± 1.5	%FS
Input Voltage	DC 5±0.5				V
Load Resistance	MIN. 10				kΩ
Supply Current	MAX. 20				mA
Insulation Resistance	MIN. 100/DC50V				MΩ
Temp. Characteristics -20°C~80°C (Reference Temp. 25°C)	At 0° :±1.0° At ±10° :±1.5°	At 0° :±1.0° At ±5° :±1.5°	At 0° :±2.5° At ±20° :±2.5°	At 0° :±2.5° At ±30° :±3.0°	

【Mechanical Data】

Response time	0.5 Approx. (Damper Oil 1000mm ² /s)				sec.
Mechanical Angle	MIN. ±12	MIN. ±6	MIN. ±24	MIN. ±36	°
Mass	230 Approx.				g

【Mechanical Data】

Operating Temperature Range	-20~+80				°C
Storage Temperature Range	-40~+80				°C
Vibration	70m/s ² 3axis 2hours				
Shock	1000m/s ² 6directions 3times				
EMS	100V/m 200M ~1GHz				
ESD(Case-Each Terminal)	±4				kV
ESD(Each Terminal)	±4				kV
IP Rating	IP65				

■ Handling Instruction

- This product may be influenced from external magnetic field.
- Use this sensor in the place where is protected from ESD.