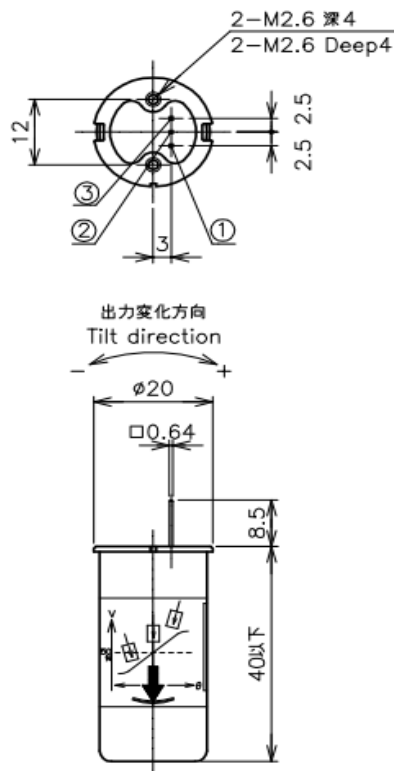


Contactless Hall-IC Tilt Angle Sensor

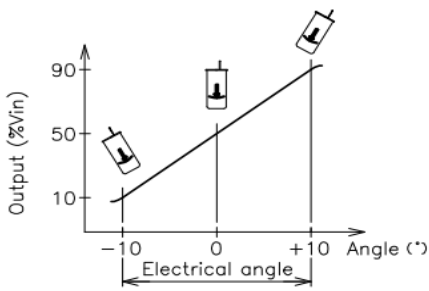
PMP-SxxHT Series

■ Dimension [mm]

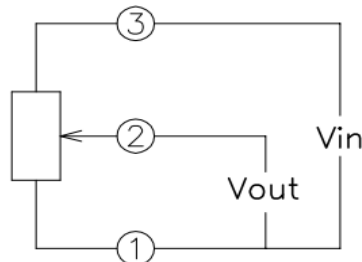
- Contactless Hall-IC Tilt Angle Sensor
- Spring plate pendulum mechanism
- Effective Electrical Tilt Angle :
 - ±5° (PMP-S5HT)
 - ±10° (PMP-S10HT : Standard)
 - ±20° (PMP-S20HT)
 - ±30° (PMP-S30HT)
- Center-based Linearity : ±1%FS
- 【Options】
- Other damper oil viscosity
- Narrower output voltage range
- 【Material】
- Housing : Zinc, Nickel plate
- Case : Steel, Nickel plate



■ Output Characteristics

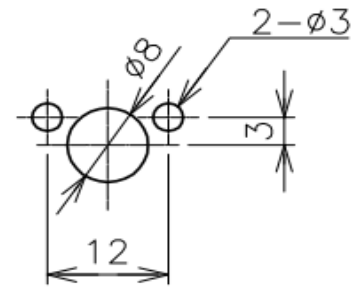


■ Schematic



・ ①, ②, ③ : Terminal No.

■ Mounting



【Model No.】	PMP-S10HT	PMP-S5HT	PMP-S20HT	PMP-S30HT
-------------	-----------	----------	-----------	-----------

【Electrical Data】

Effective Electrical Tilt Angle	±10	±5	±20	±30	°
Tilt Sensitivity	MAX. 0.02	MAX. 0.01	MAX. 0.04	MAX. 0.06	°
Output Range	10~90				%Vin
Index Point	50±3	50±6	50±2	50±2	%Vin
Zero Based Linearity	±1			±1.5	%FS
Input Voltage	DC 5±0.5				V
Load Resistance	MIN. 10				kΩ
Supply Current	MAX. 10				mA
Insulation Resistance	MIN. 100/DC50V				V
Temp. Characteristics -20°C~80°C (Reference Temp. 25°C)	At 0°:±1.0° At ±10°:±1.5°	At 0°:±1.0° At ±5°:±1.5°	At 0°:±2.5° At ±20°:±2.5°	At 0°:±2.5° At ±30°:±3.0°	

【Mechanical Data】

Responsivity	0.3 Approx. (Damper Oil 200mm ² /s)				Sec.
Mechanical Angle	MIN. ±12	MIN. ±6	MIN. ±24	MIN. ±36	°
Mass	35 Approx.				g

【Mechanical Data】

Operating Temperature Range	-20~+80				°C
Storage Temperature Range	-40~+80				°C
Vibration	70m/s ² 3axis 2hours				
Shock	1000m/s ² 6directions 3times				
EMS	100V/m 200M ~ 1GHz				
ESD(Case-Each Terminal)	±4				kV
ESD(Each Terminal)	±4				kV
IP Level	IP65(Without Terminals)				

■ Handling Instruction

- ・ This product may be influenced from external magnetic field.
- ・ Use this sensor in the place where is protected from ESD.