

CP-2F Multi-turn Series - CP-2FWP-10S

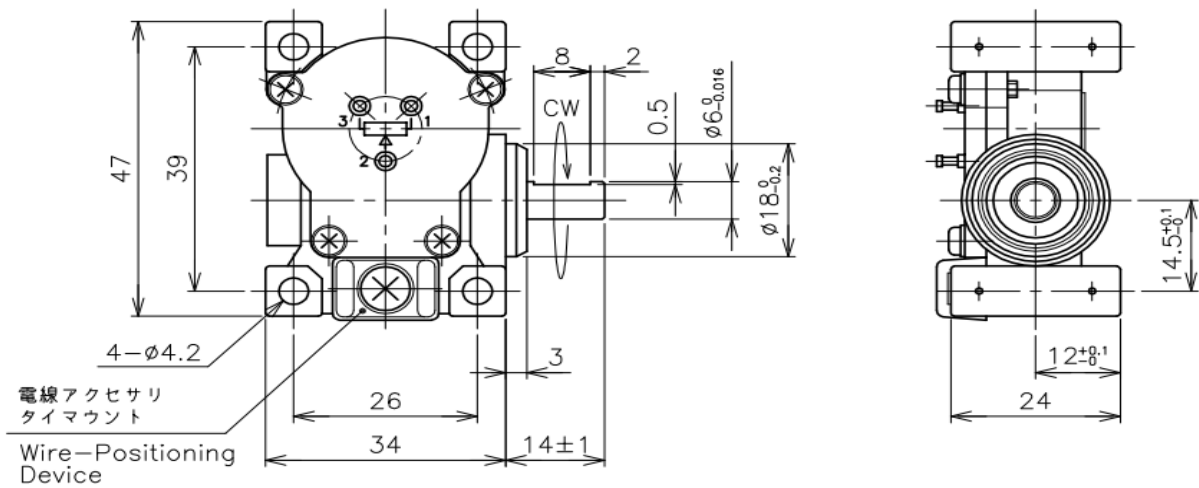


- Conductive Plastic Angle Sensor
- Effective Electrical Angle : 3400°
- Independent Linearity : ±1.5%
- Retiometric Voltage Output
- IP65

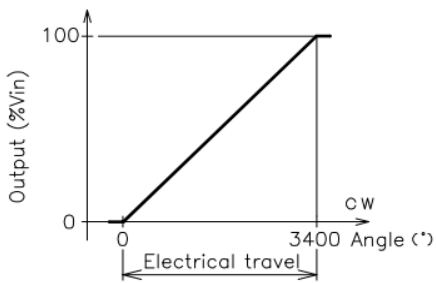
【Material】

- Housing : Aluminum
- Shaft : Stainless Steel
- Bearing : Stainless steel

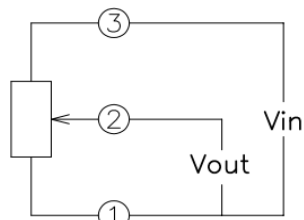
Dimension [mm]



Output Characteristics

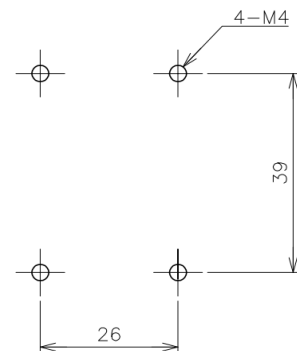


Schematic



• ①, ②, ③: Terminal No.

Mounting



【Model No.】	CP-2FWP-10S
--------------------	-------------

【Electrical Data】

Effective Electrical Travel	3400 +20、-30	°
Total Resistance	1、2、5	kΩ
Total Resistance Tolerance	±20	%
Independent Linearity	±1.5	%
Power Rating	0.5/50°C	W
Output Smoothness	MAX. 0.1	%
Insulation Resistance	MIN. 100/DC1000V	MΩ
Dielectric Strength	AC1000/1min.	V
Temperature Coefficient Of Resistance	±400	ppm/K

【Mechanical Data】

Gear Ratio	10:1	
Torque	MAX. 25	mN·m
Repeatability	MAX.0.5	%
Thrust Load Tolerance	3	N
Radial Load Tolerance	5	N
Mass	55 Appx.	g

【Environmental Data】

Category Temperature Range	-40~+100	°C
Storage Temperature Range	-40~+100	°C
IP Rating	IP65	

■ Handling Instruction

To avoid burnout of resistive element, do not supply 1mA Min. current to terminal 2.