

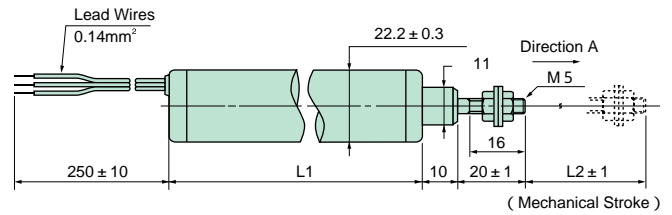
RoHS Compliance

# LP-F series

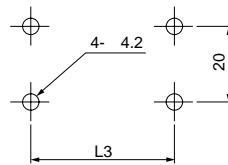
## FEATURES

- Light Weight
- Low friction.

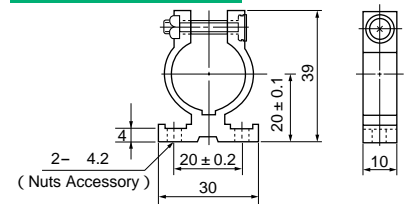
## DIMENSION (mm)



## MOUNTING



## MTG Holes Spacing



## Housing Length · Mounting

Model No.	LP-100F-C	LP-150F-C	LP-200F-C	LP-250F-C	LP-300F-C
Housing Length(L1)	138 ± 1mm	188 ± 1mm	238 ± 1mm	288 ± 1mm	338 ± 1mm
Mech. Stroke(L2)	103 ± 1mm	153 ± 1mm	203 ± 1mm	253 ± 1mm	303 ± 1mm
MTG Holes Spacing(L3)	124mm	174mm	224mm	274mm	324mm

## Electrical Specifications

Model No.	LP-100F-C	LP-150F-C	LP-200F-C	LP-250F-C	LP-300F-C
Electrical Stroke	100mm ± 0.5mm	150mm ± 0.5mm	200mm ± 1mm	250mm ± 1mm	300mm ± 1mm
Total Resistance	1, 2, 5, 10k	1, 2, 5, 10k	1, 2, 5, 10k	2, 5, 10k	2, 5, 10k
Total Resistance Tolerance	± 20%				
Independent Linearity	± 0.3%				
Power Rating	2W / 70° C	3W / 70° C	4W / 70° C	4W / 70° C	4W / 70° C
Output Smoothness	0.1% / MAX.				
Insulation Resistance	100M MIN.DC500V				
Dielectric Strength	AC500V 1 Minute				
TC of Resistance	± 400ppm /				

## Mechanical Specifications

Friction	1N MAX.				
Weight	Approx. 110g	Approx. 140g	Approx. 170g	Approx. 200g	Approx. 230g

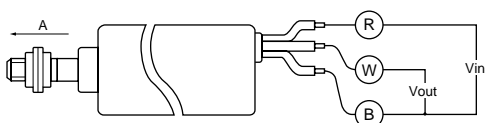
## Environmental Specifications

Operating Temperature	25 ~ 80
Vibration	100m / s <sup>2</sup> 500Hz 3 axis 2hours each
Shock	500m / s <sup>2</sup> 11ms 6 axis 3times
Life Cycle	5M Cycles MIN.

## OPTIONS

- 2 sections
- Independent Linearity : ± 0.1%

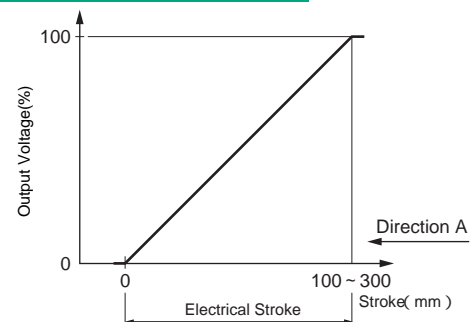
## SCHEMATIC



- (R) =RED
- (W) =WHITE
- (B) =BLACK

Red, White and Black indicate harness colors

## OUTPUT CHARACTERISTICS



## MOUNTING HARDWARE

- 4-M4 Nuts
- 2-M5 Nuts, 2-Lock Washers