

RoHS Compliance

CP-2FABSJ

FEATURES

- Seald IP-65
- Suitable for automotive & off-road equipment applications.
- Low cost
- Easy to joint: Shaft top has both side cut and thread.
- Built-in Return Spring

Electrical Specifications

Electrical Angle	90 ± 3 °
Total Resistance	1k
Total Resistance Tolerance	± 20%
Independent Linearity	± 3%
Max. Input Voltage	DC18V MAX. @50
Insulation Resistance	100M MIN. DC 1000V
Dielectric Strength	AC 1000V 1 Minute
TC of Resistance	± 400ppm /

Mechanical Specifications

Mechanical Angle	100 ± 5 °
Torque	20 ~ 100mN·m
Stopper Strength	1N·m MIN.
Weight	Approx. 35g
Radial Load	4N MAX.
Thrust Load	3N MAX.

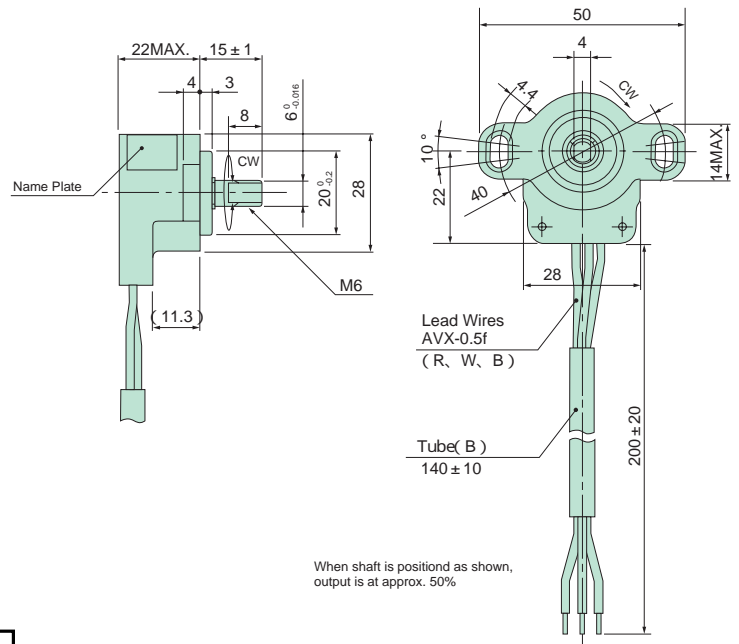
Enviromental Specifications

Operating Temperature	40 ~ 100
Vibration	245m/s ² 20 ~ 500Hz 3 axis 2hours each
Shock	500m/s ² 11ms 3 axis 6 axis 3times
Life Cycle	5M Cycles
IP Level	IP65

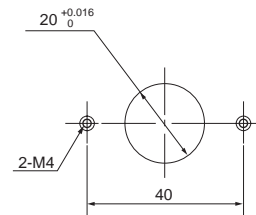
OPTIONS

- Without Return spring
- Total resistance: 1k ~ 5k /90 ° on request
- Different electrical angle
Single output - 340 °
Dual output - 90 MAX.

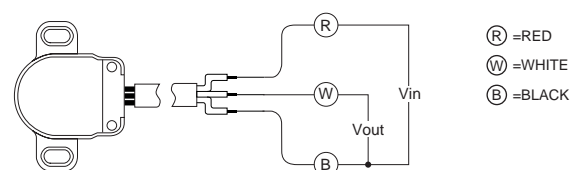
DIMENSION (mm)



MOUNTING



SCHEMATIC



Red, White and Black indicate harness colors

OUTPUT CHARACTERISTICS

