

RoHS Compliance

CP-2FB (b)

FEATURES

- Compact & low cost.
- Bushing mount
- 2 Ball Bearings

Electrical Specifications

Electrical Angle	340 ° $\begin{smallmatrix} +2 \\ -3 \end{smallmatrix}$
Total Resistance	0.5, 1, 2, 5k
Total Resistance Tolerance	± 20%
Independent Linearity	± 1%
Power Rating	0.5W/50
Output Smoothness	0.1% MAX.
Insulation Resistance	100M MIN. DC 1000V
Dielectric Strength	AC1000V 1 Minute
TC of Resistance	± 400ppm /

Mechanical Specifications

Mechanical Angle	360 °Endless
Torque	0.5mN·m MAX.
Weight	Approx. 20g
Radial Load	5N MAX.
Thrust Load	2N MAX.

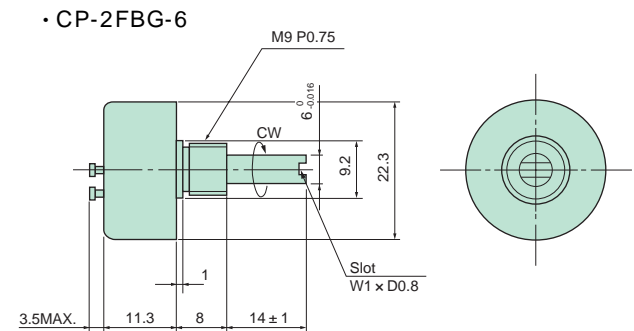
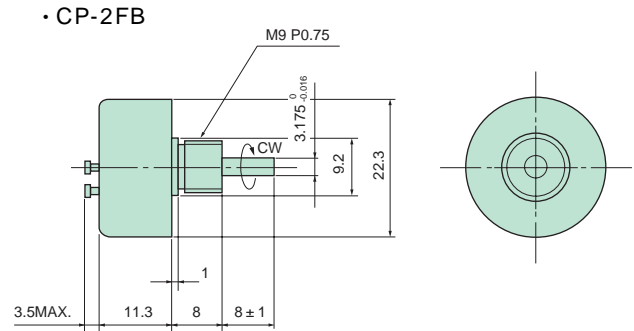
Environmental Specifications

Operating Temperature	40 ~ 100
Vibration	150m / s ² 2000Hz 3 axis 2hours each
Shock	500m / s ² 11ms 6 axis 3times
Life Cycle	10MCycle MIN.

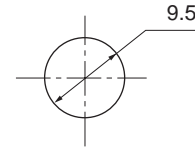
OPTIONS

- Metal Sleeve Bearing "Model CP-2FB(m)"
- 6 shaft : CP-2FB-6 Teflon coating bearing
- 6 shaft & O-ring : CP-2FBG-6 Teflon coating bearing

DIMENSION (mm)

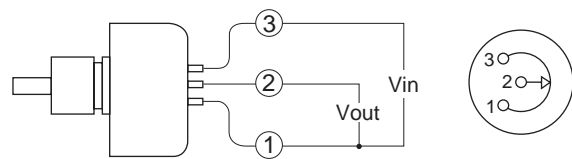


MOUNTING



MOUNTING HARDWARE
1-M9 Nut, 1-Lock Washer

SCHEMATIC



1,2,3 indicate terminal No.

OUTPUT CHARACTERISTICS

