

RoHS Compliance  
**CP-2FK (b)**
**FEATURES**

- Compact & low cost
- Servo mount
- 2 Ball Bearings

## Electrical Specifications

<b>Electrical Angle</b>	340 ° $+2^{\circ}$ / $-3^{\circ}$
<b>Total Resistance</b>	0.5、1、2、5k
<b>Total Resistance Tolerance</b>	± 20%
<b>Independent Linearity</b>	± 1%
<b>Power Rating</b>	0.5W/50
<b>Output Smoothness</b>	0.1% MAX.
<b>Insulation Resistance</b>	100M MIN. DC 1000V
<b>Dielectric Strength</b>	AC1000V 1 Minute
<b>TC of Resistance</b>	± 400ppm /

## Mechanical Specifications

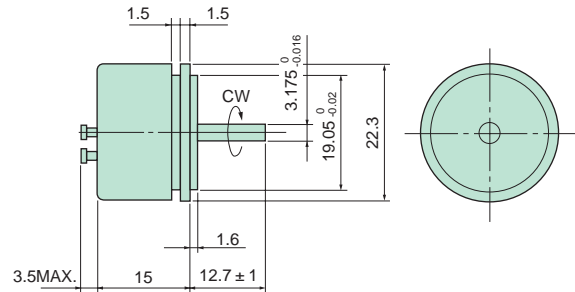
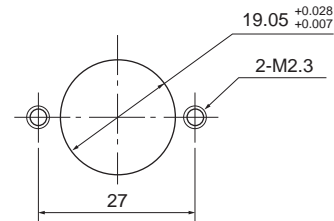
<b>Mechanical Angle</b>	360 °Endless
<b>Torque</b>	0.5mN·m MAX.
<b>Weight</b>	Approx. 20g
<b>Radial Load</b>	5N MAX.
<b>Thrust Load</b>	2N MAX.

## Enviromental Specifications

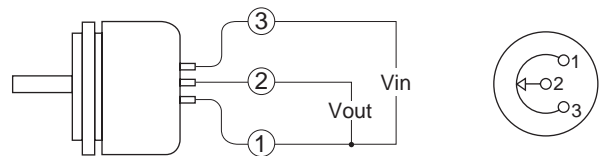
<b>Operating Temperature</b>	40 ~ 100
<b>Vibration</b>	150m / s <sup>2</sup> 2000Hz 3 axis 2hours each
<b>Shock</b>	490m / s <sup>2</sup> 11ms 6 axis 3times
<b>Life Cycle</b>	10M Cycle MIN.

## OPTIONS

- Metal sleeve bearing "Model CP-2FK(m)"

**DIMENSION** (mm)

**MOUNTING**


MOUNTING HARDWARE  
Cleats: 3pcs

**SCHEMATIC**


1,2,3 indicate terminal No.

**OUTPUT CHARACTERISTICS**
